

Cobalt-chromium alloy CoCrMo spherical powder

CoCrMo (UNS R30075) is a cobalt-based alloy especially used where high stiffness or a highly polished and extremely wear-resistant material is required. Material often used for applications such as knee implants, metal-to-metal hip joints and dental prosthetics.

Cobalt alloys are also used in aero- and land-based gas turbines. This non-magnetic CoCrMo alloy exhibits high strength, corrosion resistance, and excellent wear resistance. It is widely used for orthopaedic and dental implants.

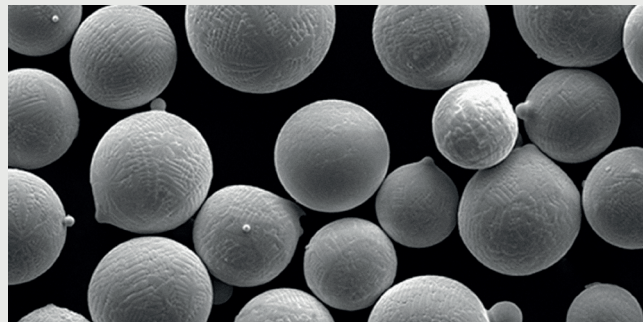
CHEMICAL COMPOSITION

	MIN	MAX		MIN	MAX
C	0.15	0.35	B	-	0.010
Mn	-	1.0	Ti	-	0.1
Si	-	1.0	Al	-	0.1
P	-	0.02	Fe	-	0.75
Cr	26	30	Cu	-	0.07
Co	Balance	Balance	Other elements	-	-
Mo	5.0	7.0	Ni	-	1.0



PHYSICAL PROPERTIES

Particle Size Range	0 - 53 μm	53 - 105 μm
Morphology	Spherical	Spherical
Particle size distribution	D10: 15 μm	D10: 52 μm
	D50: 35 μm	D50: 76 μm
	D90: 58 μm	D90: 106 μm
Angle of repose	$\leq 40^\circ$	
Apparent density	4.3 g/cm ³	4.5 g/cm ³



Standards satisfied: ASTM F1537, ASTM F799, ASTM F75

Particle size distribution. Laser diffraction.

